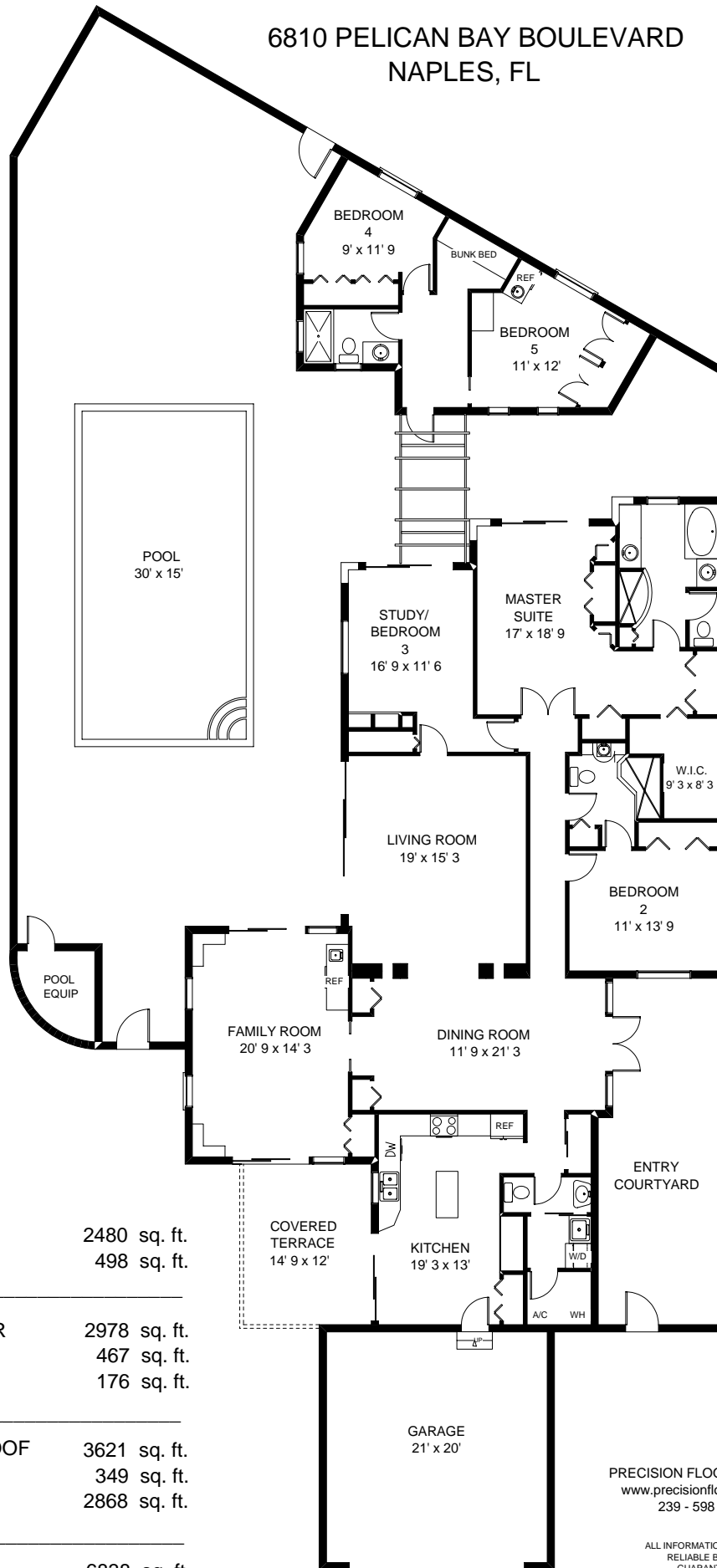


6810 PELICAN BAY BOULEVARD
NAPLES, FL



Main Living 2480 sq. ft.
Guest House 498 sq. ft.

TOTAL UNDER AIR 2978 sq. ft.
Garage 467 sq. ft.
Covered Terrace 176 sq. ft.

TOTAL UNDER ROOF 3621 sq. ft.
Entry Courtyard 349 sq. ft.
Pool Courtyard 2868 sq. ft.

TOTAL AREA 6838 sq. ft.

PRECISION FLOORPLANS, INC.
www.precisionfloorplans.com
239 - 598 - 9411

ALL INFORMATION IS DEEMED
RELIABLE BUT NOT
GUARANTEED